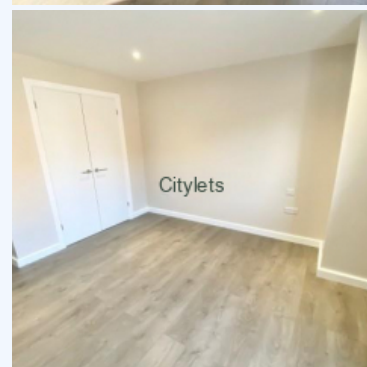
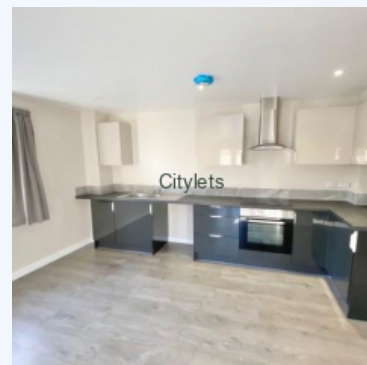


**# Danelaw Court, Two Bed, DANELAW COURT  
(RESIDENTIAL - UNFURNISHED)**

**To Let. £ 705.00 /PCM**



**Paddock Way, Hinckley, Leicestershire, LE10 0NU**

A brand new and spacious, modern two bed apartment

A brand new and spacious, modern two bed apartment consisting of an entrance hallway with storage and intercom system. two double bedrooms with built in wardrobes. Bathroom with shower over bath, walk in shower room and a large kitchen/living area with oven and fitted kitchen. The properties are available unfurnished with an allocated car parking space available at an additional £50 per month by request.

**CONVENIENCE:**